

SPONSORS

Headwaters SWCD

Jim Nichols, Rick Shiflet, Roy Stephenson

Lord Fairfax SWCD

Joan Comanor, Jim Lawrence

Shenandoah Valley SWCD

Linda Campbell, Dave Frackelton

Valley Conservation Council

John Eckman

Shenandoah Valley Pure Water Forum

Jeff Rinker

Farm Bureau

Dee Hockman

Central Shenandoah PDC

Elizabeth McCarty

Northern Shenandoah Valley Regional Commission

Jill Keihn

At-Large Members

Esteban Nieto, Pilgrims Pride Corporation
Dr. Maria Papadakis, James Madison University

ASSOCIATE SPONSORS

Potomac Conservancy:

Kelly Watkinson

Virginia Poultry Federation

Hobey Bauhan

Virginia State Dairymen's Association

Eric Paulson

Virginia Department of Forestry

Joe Lehen

"The Shenandoah RC&D Council and the United States Department of Agriculture (USDA) prohibit discrimination in all their programs and activities on the basis of race, color, national origin, gender, religion, age, disability, political beliefs, sexual orientation and marital or family status. (Not all prohibited bases apply to all programs.) Persons with disabilities who require alternative means for communication of program information (Braille, large print, audiotape, etc.) should contact USDA's TARGET Center at 202-720-2600 (Voice and TDD).

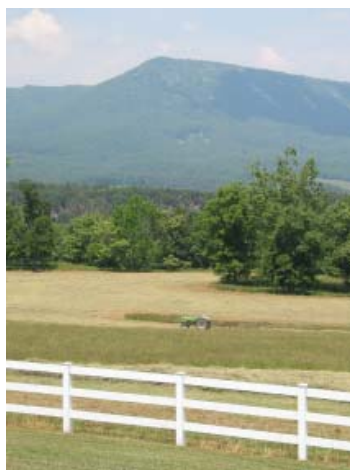
"To file a complaint of discrimination, write USDA, Director, Office of Civil Rights, Room 326W, Whitten Building, 14th and Independence Avenue, SW, Washington, DC 20250-9410 or call 202-720-5964 (voice of TDD). USDA is an equal opportunity provider and employer."



2010

Annual Report

Serving the Counties of: Augusta, Clarke, Frederick, Page, Rockingham, Shenandoah, and Warren; and the Cities of Harrisonburg, Staunton, Waynesboro, and Winchester



70 Dick Huff Lane
P. O. Box 60
Verona, Virginia 24482
Phone: (540) 248-3321
FAX: (540) 248-5502

www.shenandoahrcd.org

2010

YEAR IN REVIEW

- 11 projects completed; 17 new projects; 27 ongoing projects
- Livestock Exclusion Project: After three years of this pilot project:
 - 17 participating farms with 5 year exclusion contracts;
 - Over 68,500 linear feet of stream excluded;
 - Over 940 livestock excluded from streams;
 - Two new pilot 10-foot exclusion practices being piloted in Virginia through the Department of Conservation and Recreation and VA NRCS;
 - Stream exclusion areas range from 3 feet to 300 feet, averaging 24 feet from the streambank.
- RC&D is partnering with conservation groups in the *Smith Creek Showcase Watershed* effort, one of three showcase watersheds declared in the nation. The Council has created and maintains the Smith Creek website and is working on a variety of projects there, which includes parts of Rockingham and Shenandoah Counties.
- The Shenandoah RC&D Council was awarded a Cooperative Conservation Partnership Agreement with NRCS this summer to bring \$2.2 million, \$720,000 per year over the next three years, to the Shenandoah Valley and put more voluntary conservation practices on farms.
- Funds leveraged, cash and in-kind contributions for ongoing and completed projects in this FY: \$1,251,447.
- Received the State and Southeastern Regional RC&D Awards for Outstanding Performance by a Council, Special Award for Outstanding Service to the RC&D Program to recognize NARC&DC Projects Tour, and 2009 Outstanding Program Assistant Award to Lorraine Cormier.



Southeastern RC&D Awards to Shenandoah RC&D.

LETTER FROM THE CHAIR



John M. Eckman
Our past year's success demonstrates the power and energy that can be unleashed when people are given the right tools and the flexibility to use them creatively. Your RC&D was able to secure dedicated funding to help farmers in the Valley implement best management practices on their farms. Our "adaptive fencing" approach, allowing farmers to design streamside livestock exclusion that suits their needs and the lay of the land, is being adopted throughout the Chesapeake Bay watershed. Goats are grazing invasive species at the Frontier Culture Museum. Low income families are having their money doubled to buy fresh, nutritious local foods at the Harrisonburg Farmers Market. Community gardens are growing food, building neighborhoods, and fostering hope.

Our partnerships, on the farm, in town, and throughout the region, are showing great promise for how the Valley can build on its traditional natural resource economy while still changing and innovating with the times. Thanks to the many people and institutions who make this work possible.

Sincerely,

John M. Eckman
Chair

THANKS TO OUR SUPPORTERS! IN-KIND AND DIRECT CONTRIBUTORS:

Agua Fund, Inc.
Central Appalachian Network
Chesapeake Bay Funders Network
Joan Comanor
Community Foundation of the Central Blue Ridge
John Eckman
Dave Frackelton
Khimaira Webhosting
National Association of RC&D Councils
National Fish and Wildlife Foundation
Maria Papadakis
USDA/Natural Resources Conservation Service (NRCS)
Virginia Association of RC&D Councils
Virginia Department of Forestry
Virginia Department of Conservation and Recreation
Virginia Environmental Endowment
Kelly Watkinson

11 COMPLETED PROJECTS

Energy Savings on-Farm: Outreach and Education. The goal of this project was broad-based education and outreach to provide farmers with specific detailed information that will allow them to save on on-farm energy costs. This project included a workshop at James Madison University as well as a pilot energy audit program that assisted producers with free energy audits. Seventy-two people participated in the workshop and 15 producers received free on-farm energy audits. (Area-wide)

New Community Project II. This was the second season for the Muddy Bike Urban Garden Project, an organic market garden in Harrisonburg that trained and employed five people in a homeless or transitional situation. The garden expanded in 2010 to selling at three local restaurants as well as part-time sales at the Harrisonburg Farmers Market. The second component of this project was an expansion of community gardens at local trailer courts and churches. These helped low-income and transient populations have access to fresh vegetables, as well as allowing some produce to be donated to a local food bank. It was estimated that there was at least \$500 worth of food savings per household food budget with the garden project. (Harrisonburg/Rockingham County)



Muddy Bike Project

Shenandoah Valley Agriculture Research and Extension Center (SVAREC) Demonstration Forest. This project established baseline inventory data at SVAREC from which management prescriptions could be made for its forestland and demonstrated those management options to landowners through field days and workshops. This project demonstrated how landowners could make money through hands-on management of their forestland. (Area-wide)

Easements and Agriculture. This project involved localities, land conservation and farming groups, attorneys and farmers themselves to look at barriers and opportunities to making permanent farmland conservation more widespread in agricultural areas of Virginia. It provided insights for establishing specific agricultural easement programs and strengthening county purchase of development rights programs that have sparked continued work in this area across the state.



Easements and Agriculture

Rapid Watershed Assessment Main Stem. Rapid Watershed Assessments (RWAs) provide initial estimates of where conservation investments would best address the concerns of landowners, conservation districts, and other community organizations and stakeholders. This project provided technical assistance in putting together a RWA for the Main Stem of the Shenandoah River Watershed, assisting with distilling public comment related to watershed issues. The RWA was completed and the results made available on October 15, 2009. (Area-wide)

Promoting Local Wood Products. Capitalizing on the Buy Fresh, Buy Local movement across the Shenandoah Valley, this project promotes local wood products and technical assistance in the Shenandoah Valley through an online directory. The products directory can be accessed from the Shenandoah RC&D website. <http://www.shenandoahrccd.org/CommForestryLocalWoodProducts.htm> (Area-wide)

Shenandoah Valley Food, Farm and Community. This project initiated a Buy Fresh, Buy Local chapter in the Shenandoah Valley, started a Shenandoah Valley Food, Farm and Community work group to continue to promote a stronger, more diverse, and self-reliant community food system; and, organized and sponsored a Shenandoah Valley Local Food and Community Forum on March 27, 2009. (Area-wide)

Waste Solutions Forum Phase II. In November 2006, the Council hired for 3 years a full-time, organic by-products manager to aggressively market and facilitate proper use of excess animal manures and other nutrient-rich byproducts produced in the Shenandoah Valley. The Market Maker put together fact sheets on the value of organic resources, provided a current list of Valley compost providers, staffed information booths at farm shows and fairs, produced and distributed brochures, hosted workshops and gave educational presentations, staffed the Poultry litter hotline and fielded hundreds of calls searching for poultry litter and numerous calls of litter for sale and created a website which had "hits" from around the world. (Area-wide)

Waynesboro Farmers Market - II. A group of citizens restarted the Waynesboro Farmers' Market (WFM) in 2008 and this project supported their efforts by providing funds to pay a market manager for the third year. This season, the market manager recruited additional vendors and directed market promotions. The WFM Committee supplemented the RC&D Council grant and solicited donations from local business in the Waynesboro area. www.shenandoahrccd.org/WFM.htm (Waynesboro/Augusta County)

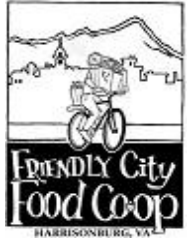


Waynesboro Farmers Market

Cultivating Sustainability and Strategic Directions for Scaling up the Shenandoah Valley's Regional Food System. This project helped fund a *Cultivating Sustainability Conference* held September 30, 2009, at Washington and Lee University. Long term, the speakers for this conference and partnerships created aim to develop long-term strategies for making local foods a more common part of institutional cafeterias and food businesses. (Area-wide)



Friendly City Food Co-op. The Shenandoah RC&D Council provided funding to defray costs for a Market Feasibility Study to support the Co-op's initiative to provide additional regional markets for locally grown food. All but proprietary information will be made publicly available to other groups in the Valley that are working on local foods initiative to increase markets for local foods. The study was completed in December 2009 and the Co-op is slated to open in Spring 2011. (Harrisonburg/Rockingham County)



MISSION

The Shenandoah RC&D's mission is to sponsor and promote projects and programs that improve the quality of life and sustainable use of natural resources, primarily in the Shenandoah River Watershed, by providing volunteer leadership, technical resources, and financial assistance.

OFFICERS

John Eckman, Chair

Joan Comanor, Vice Chair

Jim Lawrence, Immediate Past Chair

Roy Stephenson, Secretary/Treasurer

FINANCIAL STATEMENT

Cash Received From:		
Grants (Restricted):		\$124,324
Grants (Released):		\$41,232
Dues:		\$2,500
Interest:		\$1,784
Reimbursements:		\$1,363
Total:		\$171,203

Expenses in FY2010:		
Projects:		\$105,847
Administration:		\$9,420
Total:		\$115,267

The finances of the Shenandoah RC&D Council were reviewed by Yancey, Miller, Helsley, & Bowman, CPA's, PLLC.

Shenandoah RC&D filed an IRS Form 990 as a statement of financial activity in FY09.

Shenandoah RC&D is authorized by the United States Department of Agriculture and received approximately \$147,434 in technical support through the Natural Resources Conservation Service.